

The Effect of Tree Species and Seasonality on Forest Height Measurements Using an Aerial Laser Scanner – A Case Study in Latvia

CAR-ES final meeting
EgilsstaĶir
06.10.2021

Janis Ivanovs

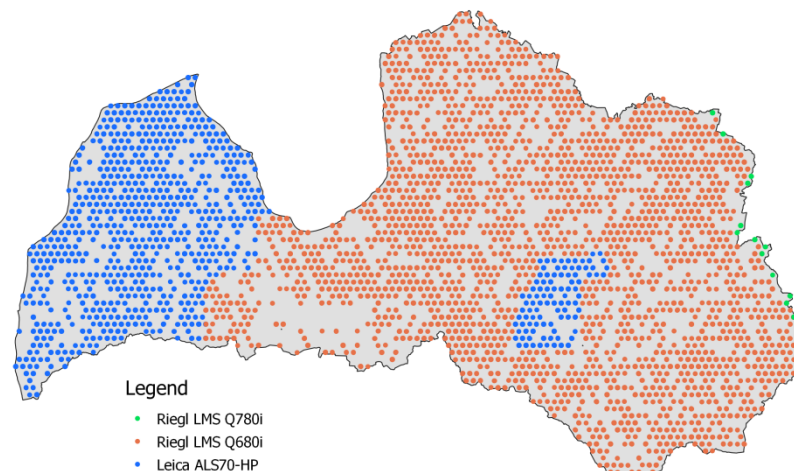
janis.ivanovs@silava.lv

Latvian State Forest Research Institute 'Silava'

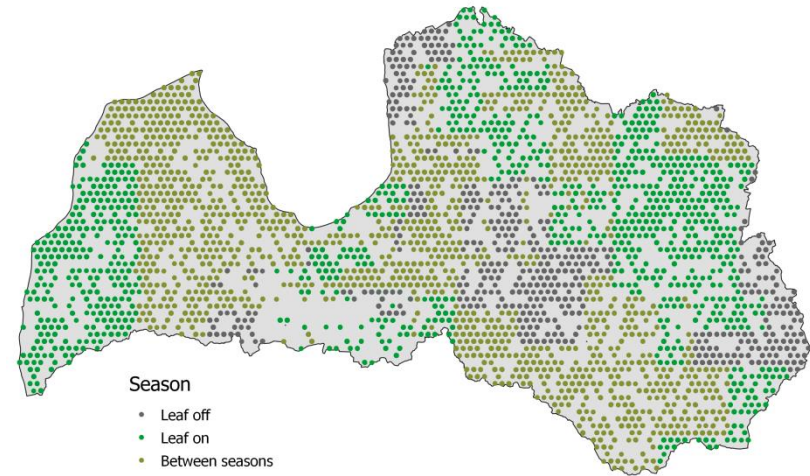
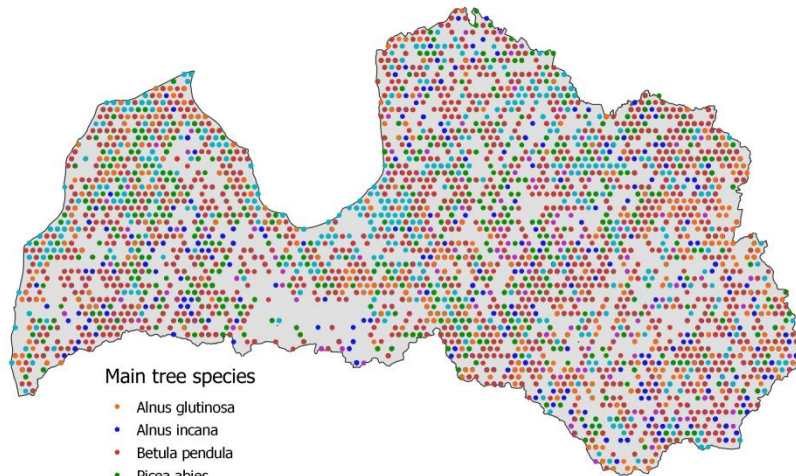
Introduction



- Aim is to build forest height models based on ALS and NFI data;
- ALS campaigns from 2013-2019;
- 7140 NFI sample plots split into model building and validation datasets;
- Models built for different tree species, scanners and seasons.



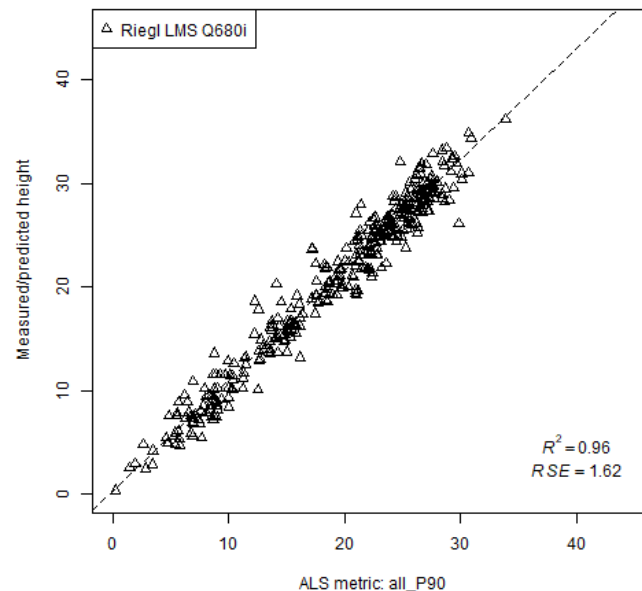
Challenge



Methods

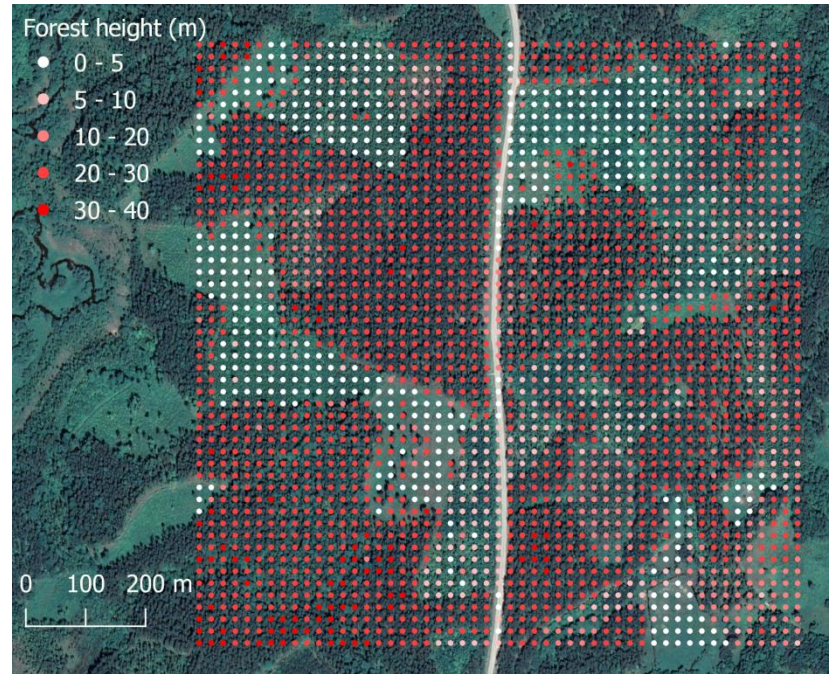


- Fusion software used for clipping ALS data to NFI plots and for calculating point cloud metrics in different height percentiles;
- Best models chosen and validated against remaining NFI plots.



Results

- Forest height maps generated for test areas;
- Future work on forest biomass predictions, Tree species classification and wall map generation.



Thank you!

